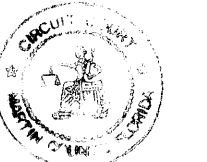


A PLAT OF
MEDALIST CLUB - COTTAGES PLAT NO. 2
 BEING A RE-PLAT OF LOTS 5-8, AND COMMON AREA, PLAT OF MEDALIST CLUB - COTTAGES, AS RECORDED IN PLAT BOOK 14, PAGE 1, PUBLIC RECORDS OF MARTIN, COUNTY, FLORIDA. LYING IN THE GOMEZ GRANT, MARTIN COUNTY, FLORIDA

I hereby certify that this plat was filed for record in Plat Book 14 page 75, Martin County, Florida, Public records this 30th day of August, 1999.
 Marsha Steeles
 Clerk Circuit Court, Martin County, Florida
 By: *Jammyh Lopez*
 Deputy Clerk



TRACT "C"
 MEDALIST CLUB - PLAT NO. 1
 PLAT BOOK 13, PAGE 79

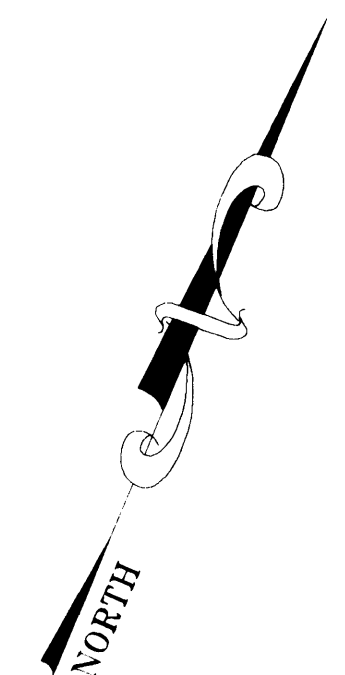
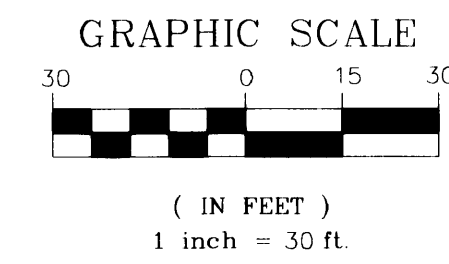
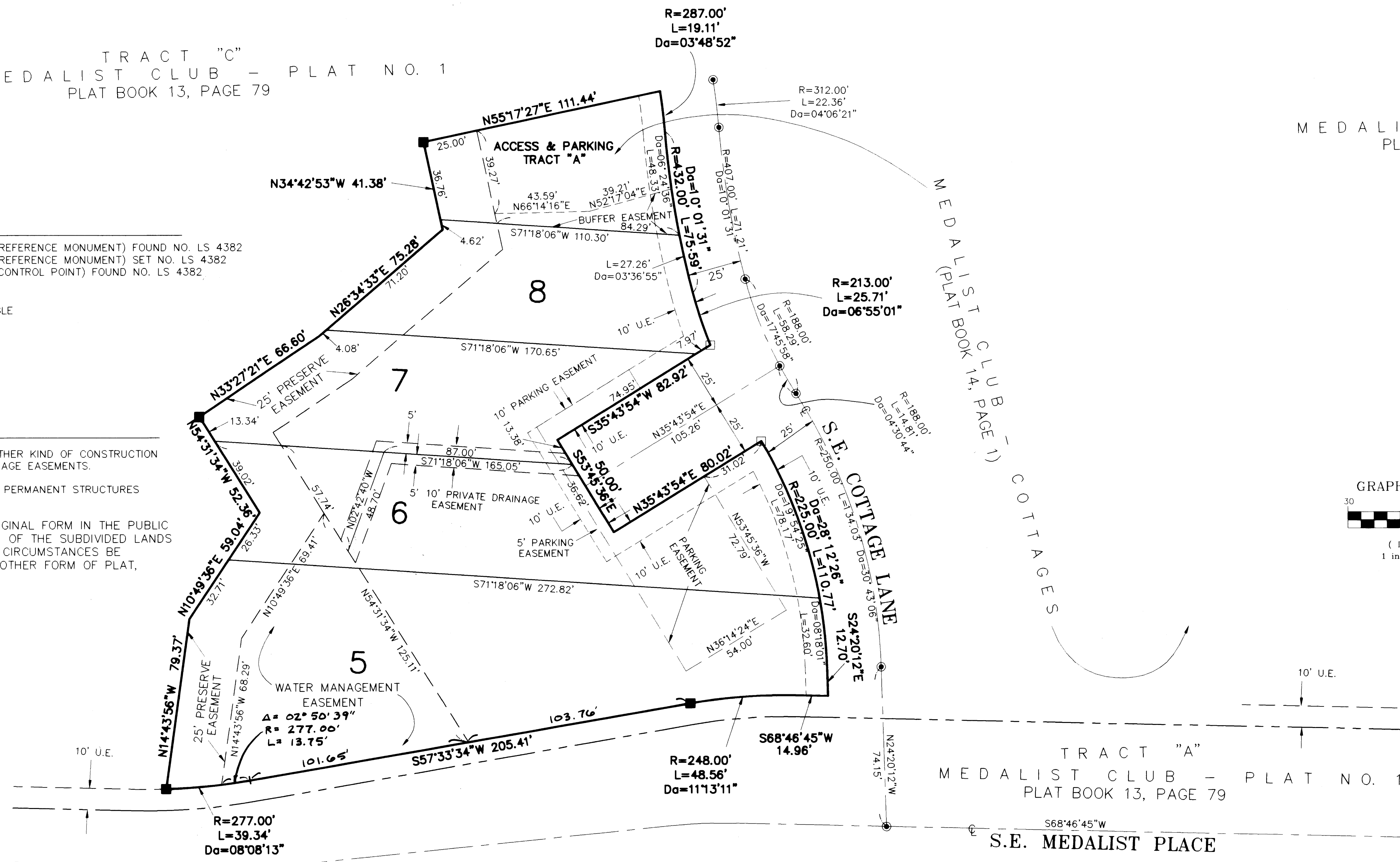
TRACT "C"
 MEDALIST CLUB - PLAT NO. 1
 PLAT BOOK 13, PAGE 79

LEGEND:

- - DENOTES P.R.M. (PERMANENT REFERENCE MONUMENT) FOUND NO. LS 4382
- - DENOTES P.R.M. (PERMANENT REFERENCE MONUMENT) SET NO. LS 4382
- - DENOTES P.C.P. (PERMANENT CONTROL POINT) FOUND NO. LS 4382
- U.E. - DENOTES UTILITY EASEMENT
- ⊕ - DENOTES CENTERLINE
- Da - DENOTES CURVE CENTRAL ANGLE

NOTES:

1. THERE SHALL BE NO BUILDING OR ANY OTHER KIND OF CONSTRUCTION OR TREES OR SHRUBS PLACED ON DRAINAGE EASEMENTS.
2. THERE SHALL BE NO BUILDING OR OTHER PERMANENT STRUCTURES PLACED ON UTILITY EASEMENTS.
3. THIS PLAT, AS RECORDED IN ITS ORIGINAL FORM IN THE PUBLIC RECORDS, IS THE OFFICIAL DEPICTION OF THE SUBDIVIDED LANDS DESCRIBED HEREON AND WILL IN NO CIRCUMSTANCES BE SUPPLANTED IN AUTHORITY BY ANY OTHER FORM OF PLAT, WHETHER GRAPHIC OR DIGITAL.



BEARING BASE:
 THE CENTERLINE OF S.E. MEDALIST PLACE AS SHOWN ON MEDALIST CLUB - PLAT NO. 1, AS RECORDED IN PLAT BOOK 13, PAGE 79, PUBLIC RECORDS OF MARTIN COUNTY, FLORIDA, IS TAKEN TO BEAR S 68°46'45\"/>

THERE MAY BE ADDITIONAL RESTRICTIONS THAT ARE NOT RECORDED ON THIS PLAT THAT MAY BE FOUND IN THE PUBLIC RECORDS OF THIS COUNTY.

LINDAHL, BROWNING, FERRARI, & HELLSTROM, INC.
 CONSULTING ENGINEERS, PLANNERS & SURVEYORS

210 JUPITER LAKES BLVD. SUITE 104 JUPITER, FL 33468 407-746-9246
 2400 S.E. MONTEREY ROAD SUITE 300 STUART, FL 34996 407-286-3883
 2222 COLONIAL ROAD SUITE 201 FT. PIERCE, FL 34950 407-461-2450
 2000 PALM BEACH LAKES BLVD. SUITE 702 WEST PALM BEACH, FL 33409 407-684-3375

2

Sheet of